



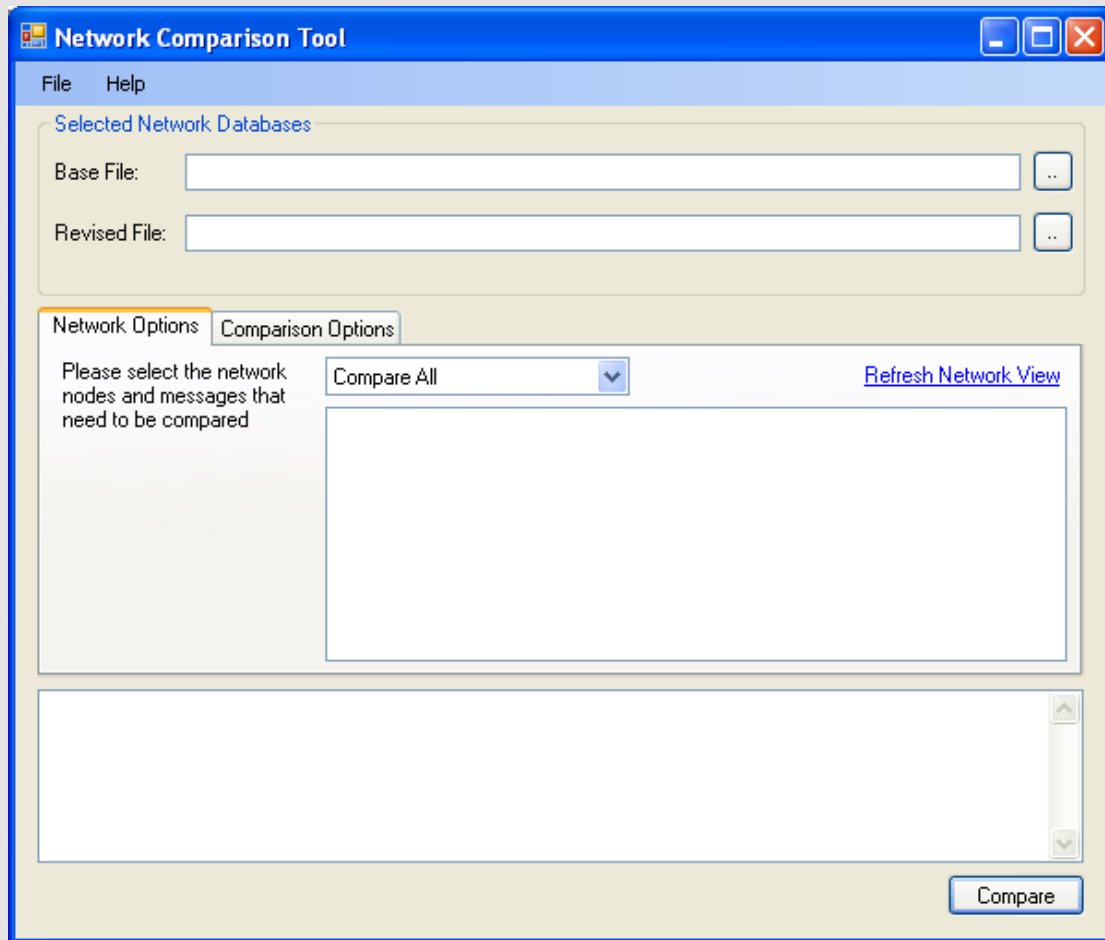
# Network Comparison Tool – Getting Started

## Contents

1	GUI .....	2
2	Process.....	2
3	Network Options.....	3
4	Selecting/De-selecting Network Options .....	3
5	Comparison Options .....	3
6	Selecting and De-selecting Comparison Option Rules.....	4
7	Differences HTML Report .....	4



## 1 GUI



## 2 PROCESS

- Load in **Base File**
- Load in **Revised File**
- Compare

Note: As preparation for “Compare at Node Level” you will need to ensure that both Base and Revised files have the same name for the Node/ECU that you are comparing. For example if you are comparing for an *Engine Control Module*, the **Base File** might have the name ECM, so you will need to ensure that the **Revised File** has the same Node/ECU name within it.



### 3 NETWORK OPTIONS

Network Option	Description
Compare All	Compares everything
Compare at node level	Removes messages that are unassigned to a node  Allows selection one, some or all nodes
Compare at message level	Allows selection one, some or all messages

### 4 SELECTING/DE-SELECTING NETWORK OPTIONS

In **Network Options**, set **Compare at node level** or **Compare at message level** and right click over the network nodes or messages. **Select All** and **Deselect All** options will be provided.

### 5 COMPARISON OPTIONS

Comparison Name	Description
Message id comparison	Compares CAN message ID and reports any changes
Message name comparison	
Message removed comparison	
Message added comparison	
Message content comparison	

Table x: Node Content Comparisons

Comparison Name	Description
Signal name comparison	
Signal attribute comparison	
Signal added comparison	
Signal removed comparison	

Table x: Message Content Comparisons

Continued over page...



Comparison Name	Description
Signal maximum value comparison	
Signal comments comparison	
Signal offset comparison	
Signal bit length comparison	
Signal multiplier comparison	
Signal units comparison	
Signal maximum comparison	

Table x: Signal Attribute Comparisons

## 6 SELECTING AND DE-SELECTING COMPARISON OPTION RULES

In **Comparison Options**, right click over the different option. **Enabled**, **Enable All Sub-Rules** and **Disable Rule** options will be provided.

## 7 DIFFERENCES HTML REPORT

When you press compare, a report in HTML format is generated.